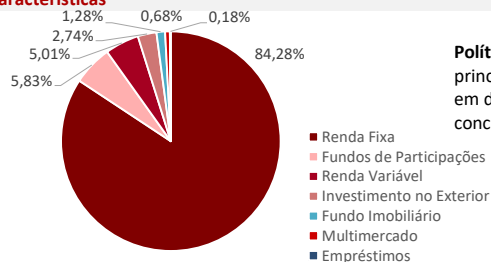
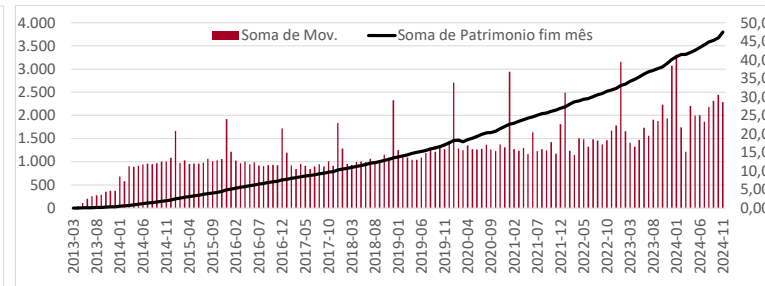
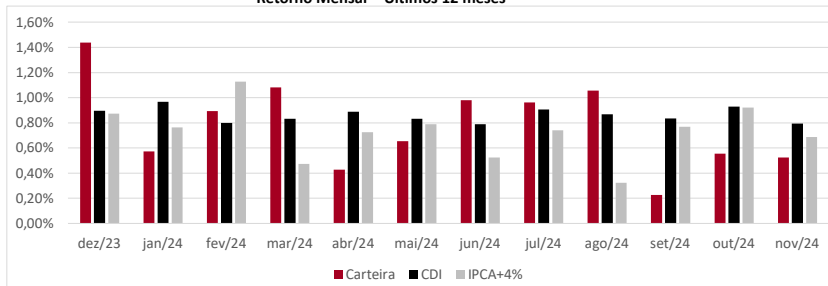


: LÂMINA MENSAL
Características


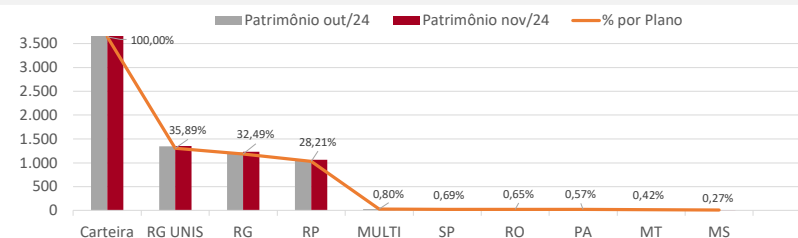
Política de Investimentos: Investe os recursos, principalmente, em cotas de fundos que atuam em diversos mercados, sem o compromisso de concentração em fator de risco específico.

Retorno (%)	Ano	12 meses	24 meses	36 meses	Início
Carteira	8,22%	9,78%	22,21%	33,36%	240,44%
CDI	9,85%	10,84%	25,57%	40,64%	183,39%
IPCA	4,29%	4,87%	9,78%	16,26%	92,93%
IPCA+4%	8,12%	9,07%	18,71%	30,74%	227,01%
IMA-B5	6,46%	8,02%	20,49%	32,08%	217,16%
Poupança	6,41%	7,02%	15,78%	24,65%	99,26%
IBOVESPA	-6,35%	-1,31%	11,72%	23,31%	114,66%
MSCI World	50,33%	54,56%	60,12%	32,31%	722,16%
MSCI Europe	27,11%	30,84%	35,55%	12,62%	322,87%

* Cf. MP 567/12

Gráficos
Retorno Mensal - Últimos 12 meses

Carteira

	Patrimônio out/24	Patrimônio nov/24	% por Plano
Carteira	3.730,13	3.778,22	100,00%
RG UNIS	1.342,92	1.355,96	35,89%
RG	1.218,59	1.227,43	32,49%
RP	1.047,20	1.065,72	28,21%
MULTI	29,70	30,30	0,80%
SP	24,65	26,10	0,69%
RO	23,34	24,60	0,65%
PA	18,58	21,71	0,57%
MT	15,18	16,05	0,42%
MS	9,98	10,36	0,27%



: LÂMINA MENSAL

novembro de 2024

Retorno Mensal (%)	nov/24	out/24	set/24	ago/24	jul/24	jun/24	mai/24	abr/24	mar/24	fev/24	jan/24	dez/23
Carteira	0,52%	0,56%	0,23%	1,06%	0,96%	0,98%	0,65%	0,43%	1,08%	0,89%	0,57%	1,44%
CDI	0,79%	0,93%	0,84%	0,87%	0,91%	0,79%	0,83%	0,89%	0,83%	0,80%	0,97%	0,89%
IPCA	0,39%	0,56%	0,44%	-0,02%	0,38%	0,21%	0,46%	0,38%	0,16%	0,83%	0,42%	0,56%
IPCA+4%	0,69%	0,92%	0,77%	0,32%	0,74%	0,52%	0,79%	0,72%	0,47%	1,13%	0,76%	0,87%
IMA-B5	0,36%	0,74%	0,40%	0,59%	0,91%	0,39%	1,05%	-0,20%	0,77%	0,59%	0,68%	1,46%
Poupança	0,57%	0,60%	0,57%	0,57%	0,57%	0,54%	0,59%	0,60%	0,53%	0,51%	0,59%	0,57%
IBOVESPA	-3,12%	-1,60%	-3,08%	6,54%	3,02%	1,48%	-3,04%	-1,70%	-0,71%	0,99%	-4,79%	5,38%
MSCI World	9,45%	3,90%	-2,06%	2,40%	3,59%	8,10%	5,64%	-0,45%	3,25%	4,74%	3,48%	2,81%
MSCI Europe	2,83%	-0,27%	-3,38%	3,61%	3,98%	3,53%	5,51%	1,01%	3,58%	2,01%	2,14%	2,93%

Composição da Carteira
Retorno Nominal em % | Retorno Relativo ao índice de referência

Performance dos Fundos em Carteira			Mês			Ano		12 meses		Início do investimento		Patrimônio	
Nome	Índice ref.	% PL	Início	Nominal	Relativo	Nominal	Relativo	Nominal	Relativo	Nominal	Relativo	Volatilidade	R\$ milhões
Bela Cintra FI RF	IPCA+4%	31,53%	13/nov/13	0,76%	0,08%	8,84%	0,71%	10,11%	1,04%	244,96%	37,62%	0,42%	R\$ 1.191,11
Itaú Inst Global Dinâmico RF	CDI	7,48%	20/fev/20	0,82%	104,02%	9,93%	100,78%	11,23%	103,64%	51,77%	105,97%	0,59%	R\$ 282,48
Itaú Institucional Optimus RF LP FICFI	CDI	6,37%	29/abr/22	1,16%	145,94%	11,40%	115,68%	12,54%	115,75%	36,04%	102,61%	0,72%	R\$ 240,55
Itaú Institucional RF Referenciado DI	CDI	4,87%	15/fev/24	0,80%	100,64%					8,71%	103,76%	0,06%	R\$ 184,11
Itaú Inst BOV11 FIC FIA	Ibovespa	3,95%	04/ago/23	-3,18%	-0,06%	-6,07%	0,28%	0,05%	1,35%	5,77%	0,62%	12,53%	R\$ 149,42
Itaú Inst RF Inflação 5 FICFI	IMA-B5	3,66%	19/jun/19	0,34%	-0,01%	6,28%	-0,18%	7,89%	-0,12%	55,64%	-1,61%	1,64%	R\$ 138,38
Itaú Institucionais Legend RF LP Fc	CDI	3,48%	02/out/19	1,09%	137,24%	12,36%	125,44%	13,92%	128,43%	61,40%	119,11%	1,44%	R\$ 131,49
BTGP Economia Real FIP Multi	IPCA+6,5%	3,31%	19/out/20	-0,16%	-1,03%	2,36%	-8,15%	2,19%	-9,50%	108,80%	39,99%		R\$ 125,14
BNP Paribas Cred Inst FICFI RF CP LP	CDI	3,23%	11/out/23	0,83%	104,47%	10,55%	107,11%	11,69%	107,90%	13,55%	108,04%	0,07%	R\$ 122,16
Sul America Cred Institucional ESG FI R	CDI	2,46%	21/jun/23	0,83%	104,04%	12,25%	124,29%	13,45%	124,13%	21,61%	126,99%	0,32%	R\$ 92,85
Bradesco RF Referenciado DI Federal E	CDI	2,31%	12/ago/24	0,79%	99,34%					3,09%	98,37%	0,03%	R\$ 87,34
Porto Seguro RF DI CP	CDI	2,01%	18/jul/24	0,81%	101,74%					4,01%	104,55%	0,13%	R\$ 75,85
Itaú Soberano RF Simples LP FICFI	CDI	1,91%	02/set/19	0,79%	100,17%	9,81%	99,52%	10,83%	99,99%	51,45%	98,40%	0,03%	R\$ 72,08
XP Corporate Light FI RF CP LP	CDI	1,83%	24/jan/23	0,81%	102,37%	10,98%	111,44%	12,19%	112,54%	24,91%	107,79%	0,27%	R\$ 69,27
Vot Allianzgi Euro Eq Growth FIM IE	MSCI Europe	1,72%	22/mai/19	1,45%	51,12%	21,01%	-6,10%	29,17%	-1,66%	100,97%	10,68%	16,88%	R\$ 65,04
Sul América Excellence FI RF CP	CDI	1,63%	24/jan/23	0,81%	101,66%	11,53%	117,00%	12,60%	116,24%	25,71%	111,25%	0,24%	R\$ 61,60
MAG Renda Fixa FI	CDI	1,56%	13/set/23	0,80%	100,30%	10,02%	101,72%	11,12%	102,62%	13,97%	102,56%	0,22%	R\$ 58,91
Bradesco Inst FIC FI RF IMA-B5	IMA-B5	1,55%	16/ago/23	0,33%	93,00%	6,15%	-0,31%	7,75%	-0,27%	9,12%	-0,44%	1,67%	R\$ 58,62
Capitânia Premium FIC FIRF CP LP	CDI	1,41%	04/jun/21	1,02%	128,42%	9,69%	98,35%	10,67%	98,46%	44,44%	100,35%	0,95%	R\$ 53,35
BTG Pactual Créd Corp I FIQFI RF CP	CDI	1,37%	30/ago/21	0,85%	107,27%	12,09%	122,68%	13,38%	123,53%	49,35%	115,29%	0,27%	R\$ 51,82
LFT	CDI	1,35%	05/dez/23	0,70%	88,00%	9,36%	94,99%			10,21%	95,61%		R\$ 51,16
Inter Corporate RF Crédito Privado	CDI	1,14%	15/mai/24	0,81%	101,79%					5,83%	102,64%	0,07%	R\$ 43,14
Schroder Sustent Ações Globais IS IE	MSCI World	1,01%	24/mai/24	4,83%	51,11%					19,83%	-9,51%	15,52%	R\$ 38,33
Santander RF Ref DI Tit Público Hiper	CDI	1,01%	21/nov/24	0,81%	101,74%					0,25%	101,12%	0,04%	R\$ 38,31
BTG Pactual Inv de Impacto FIP Mult	IPCA+6,5%	0,97%	30/ago/21	-0,08%	-9,22%	13,41%	2,90%	13,17%	1,48%	22,26%	-25,24%	21,92%	R\$ 36,81
BTG Pactual Explorer Inst FI RF LP	CDI	0,97%	13/mar/24	0,61%	77,02%					4,90%	65,13%	1,26%	R\$ 36,80
AZ Quest Small Mid Caps Inst. FICFIA	SMLL	0,72%	09/jun/20	-0,40%	8,95%	0,40%	19,07%	6,20%	19,13%	15,87%	33,03%	11,79%	R\$ 27,31
Capitânia Reit Inst Fc FIM CP	IFIX	0,68%	25/jun/19	0,66%	-31,27%	2,36%	7,62%	5,18%	6,41%	53,29%	32,54%	3,23%	R\$ 25,67
Tivio Banks RF Crédito Privado FI	CDI	0,58%	10/nov/23	0,80%	100,86%	10,32%	104,70%	11,39%	105,15%	12,04%	104,73%	0,06%	R\$ 21,97
Santander RF IMA-B5 Premium FICFI	IMA-B5	0,56%	18/dez/23	0,33%	93,81%	6,22%	-0,24%			6,75%	-0,25%	1,65%	R\$ 21,02
Bio Bravo Renda Varejo FII	IFIX	0,48%	20/dez/23	-3,60%	170,78%	-7,55%	-2,29%			-6,57%	-4,23%		R\$ 18,09
BTG Pactual Economia Real II FIPM CLU	IPCA+8%	0,43%	04/mai/23	-0,80%	-82,12%	0,95%	-11,00%	-2,48%	-15,74%	-15,86%	-35,73%		R\$ 16,33
Spectra VI Institucional FIP Multiestrat	IPCA+8%	0,42%	31/mar/23	1,27%	130,36%	6,50%	-5,45%	-8,95%	-22,21%	51,40%	29,98%		R\$ 16,03
VBI Prime Properties FII	IFIX	0,40%	20/dez/23	-6,84%	324,49%	-22,78%	-17,52%			-21,30%	-18,96%		R\$ 15,17
Pátria Private Equity Fund VII Feeder I	IPCA+7%	0,40%	28/set/23	-0,39%	-43,17%	9,99%	-1,00%	10,87%	-1,34%	8,93%	-5,16%		R\$ 15,17
Fator Verita Multiestratégia Imobiliária	IFIX	0,40%	22/jul/24	-3,38%	160,46%					-25,36%	-17,88%		R\$ 15,06
Vinci Selection Equities FIA	Ibovespa	0,34%	30/nov/22	-4,05%	129,74%	-8,70%	-2,35%	-2,31%	-1,01%	4,80%	-6,92%	12,75%	R\$ 12,70
Carteira de Empréstimos	CDI	0,18%	05/dez/23	0,70%	88,00%	9,36%	94,99%			10,21%	95,61%		R\$ 6,73
Perfin Voyager FIP Infra	IPCA+6%	0,18%	13/jun/24	0,10%	12,02%					-11,20%	-15,93%	65,24%	R\$ 6,71
Vinci Partners IV Feeder	IPCA+6%	0,09%	25/abr/24	-6,02%	-723,55%					-3,92%	-10,08%		R\$ 3,39
BTG Pactual Infraestrutura III FIP Multi	IPCA+8%	0,02%	02/jul/24	20,15%	2068,33%					-31,03%	-36,10%		R\$ 0,76
											Patrimônio Total:	R\$ 3.778,22	